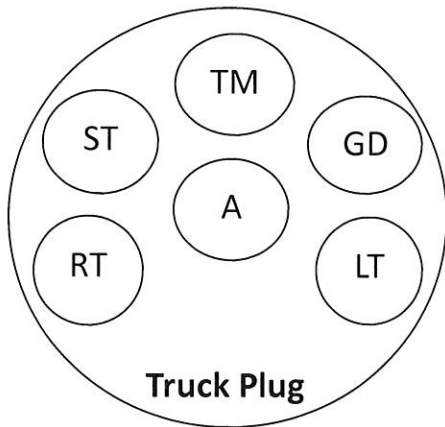
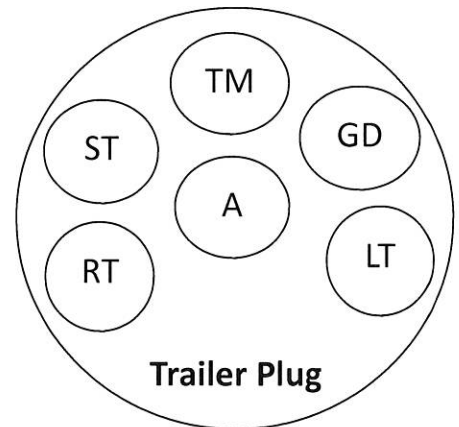


6 Pole Round Connector

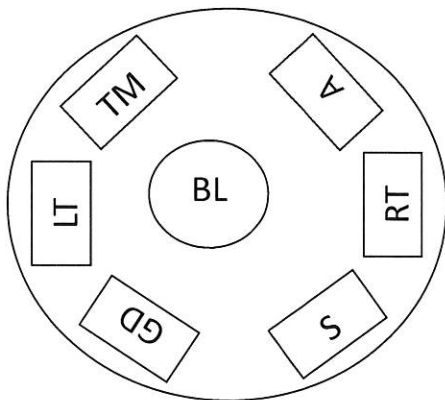


TM - Tail Light (Brown)
ST - Brake (Black)
GD - Ground (White)
LT - Left Turn (Yellow)
RT - Right Turn (Green)
A - Auxiliary Hot Wire (Red)



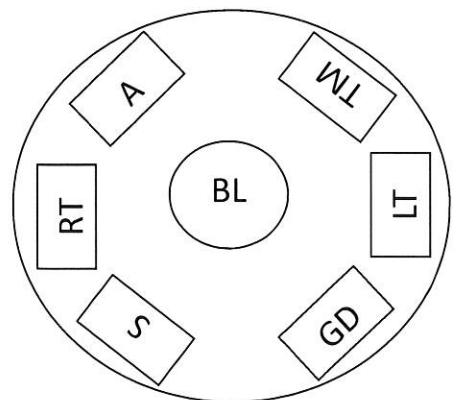
Note: Locate wires by function only. Color coding is not standard among all manufacturers.

7 Pole Round Connector



Vehicle End

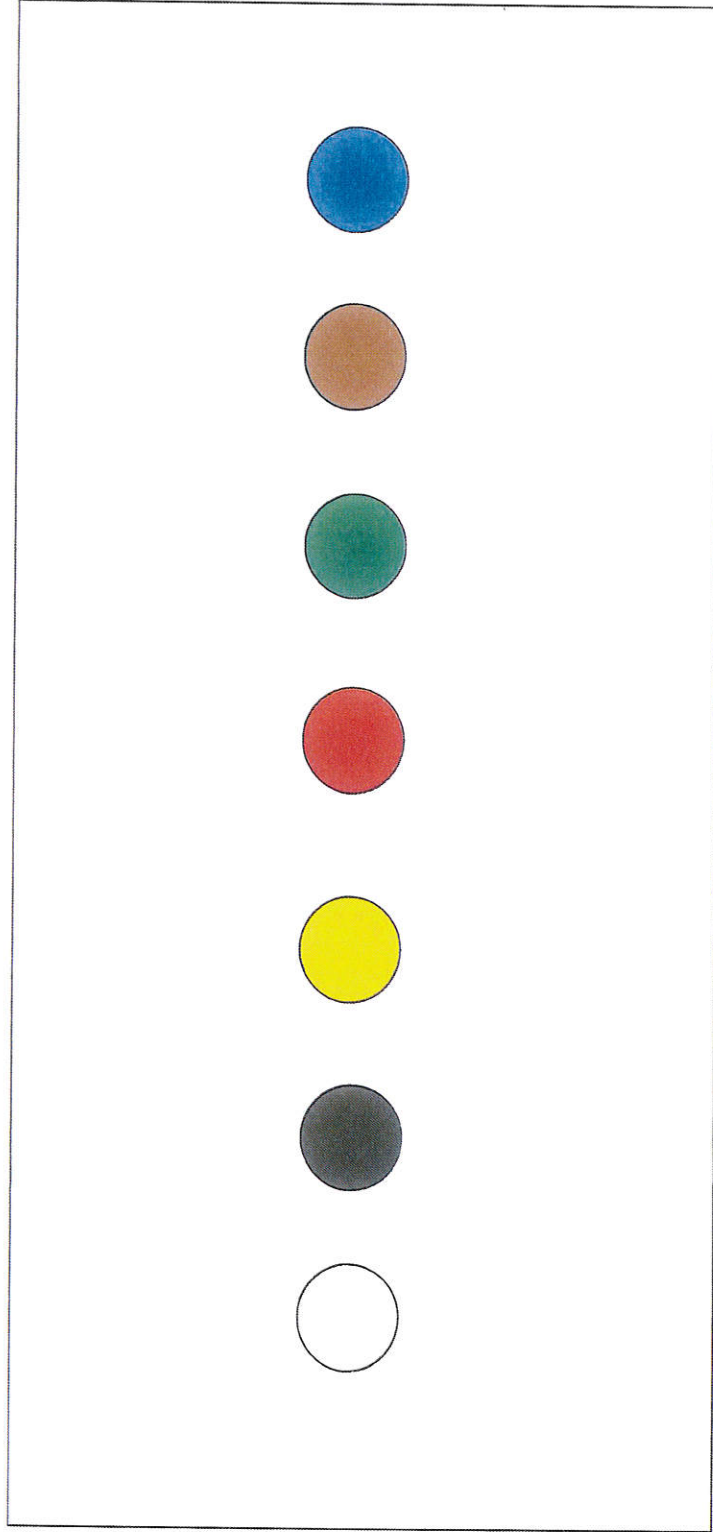
TM - Tail Light (Brown)
S - Brake (Black)
BL—Backup Light (Blue)
GD - Ground (White)
LT - Left Turn (Yellow)
RT - Right Turn (Green)
A - Auxiliary Hot Wire (Red)



Trailer End

Caution: Some RV manufacturers have a slight color code variation on the trailer end of the plug. A particular unit may require alteration, however, the plug configuration should remain the same. Note: Locate wires by function only. Color coding is not standard among all manufacturers.

Junction Box Wiring Instructions



White—Ground

Black—Brake

Yellow— Left Turn

Red—Constant Hot

Green—Right Turn

Brown—Tail Light / Maker

Blue—Blank